

**Appendix 6. Gas Infrastructure Serving Generation in Ontario**

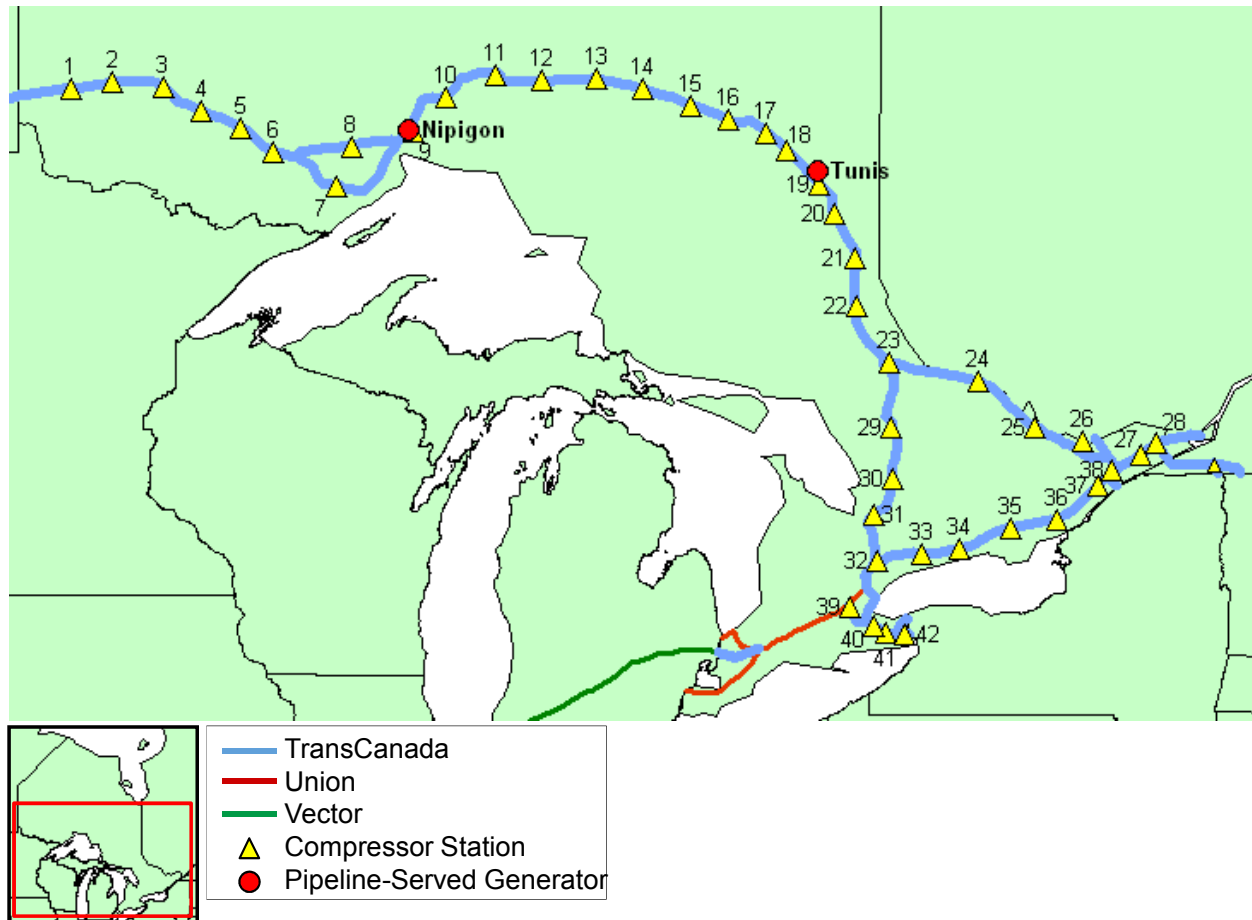
**Table of Contents**

TransCanada Pipe Lines Limited.....	1
Vector Pipeline (Enbridge / DTE Energy Company) .....	3
Union Gas Limited (Spectra Energy) .....	4
Enbridge Gas Distribution .....	6

**TransCanada Pipe Lines Limited**

Capacity: 6,573 MMcf/d (summer) / 6,862 MMcf/d (winter)<sup>1</sup>

**Figure A6-1. TransCanada Facilities in Ontario**



**Table A6-1. Ontario Generators Directly Connected to TransCanada**

Generator	Capacity (MW)
Nipigon	42.4
Tunis	60.0

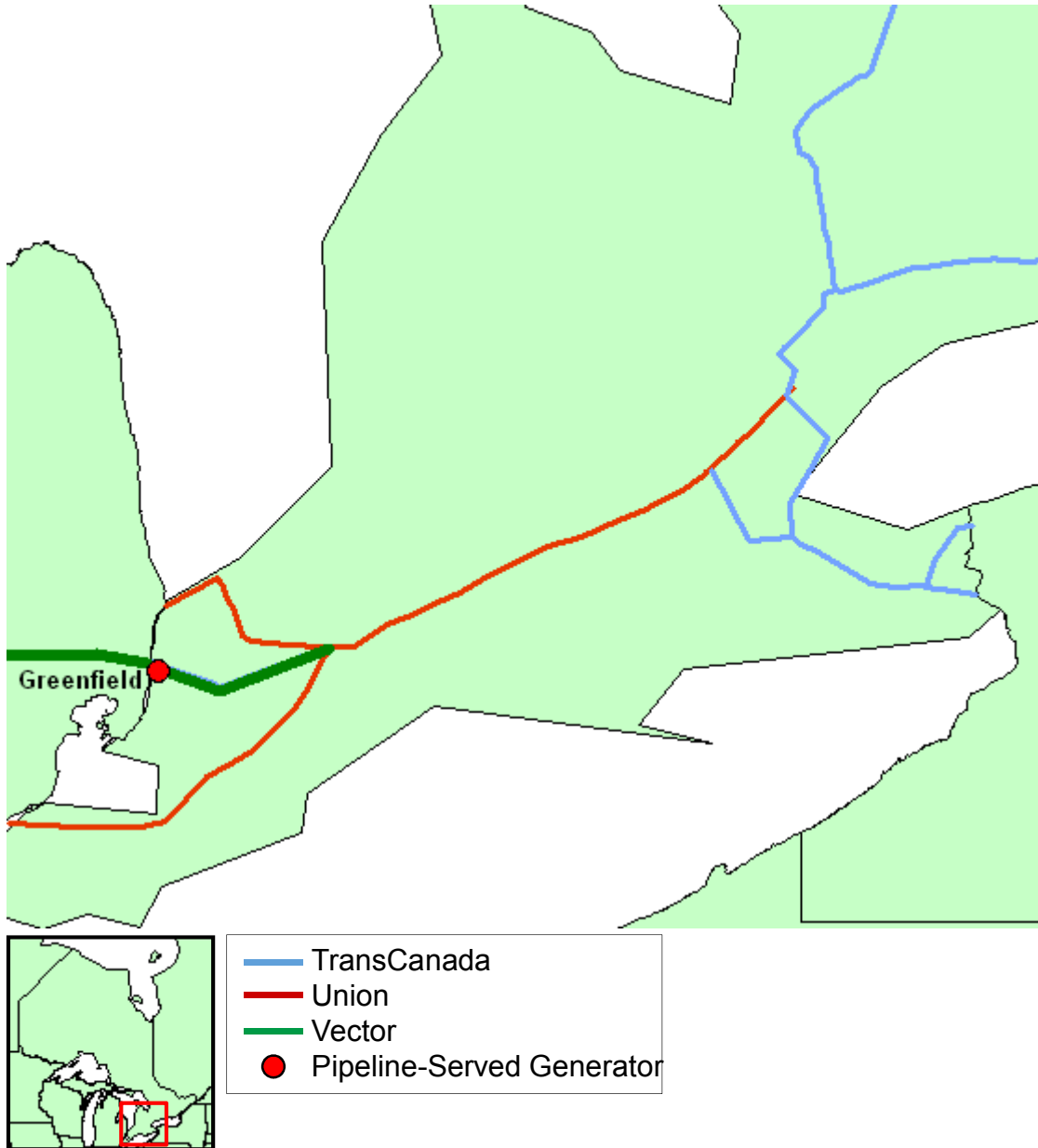
<sup>1</sup> The mainline flow-in capacity at Empress in Alberta. Source: <http://www.transcanada.com/customerexpress/2859.html>

**Table A6-2. TransCanada Compressor Stations in Ontario**

<b>ID</b>	<b>Name</b>	<b>Location</b>
1	Station 49	Kenora, ON
2	Station 52	Vermilion Bay, ON
3	Station 55	Dryden, ON
4	Station 58	Ignace, ON
5	Station 60	Martin, ON
6	Station 62	Upsala, ON
7	Station 68	Thunder Bay, ON
8	Station 69	Eaglehead, ON
9	Station 75	Nipigon, ON
10	Station 77	Jellicoe, ON
11	Station 80	Geraldton, ON
12	Station 84	Klotzlake, ON
13	Station 86	Hearst, ON
14	Station 88	Calstock, ON
15	Station 92	Mattice, ON
16	Station 95	Kapuskasing, ON
17	Station 99	Smooth Rock Falls, ON
18	Station 102	Potter, ON
19	Station 105	Ramore, ON
20	Station 107	Swastika, ON
21	Station 110	Haileybury, ON
22	Station 112	Marten River, ON
23	Station 116	North Bay, ON
24	Station 1206	Deux Rivieres, ON
25	Station 1211	Pembroke, ON
28	Station 1217	Stittsville, ON
27	Station 147	Cornwall, ON
28	Station 148	Les Cedres, ON
29	Station 119	Sundridge, ON
30	Station 123	Bracebridge, ON
31	Station 127	Barrie, ON
32	Station 130	Maple, ON
33	Station 134	Bowmanville, ON
34	Station 136	Cobourg, ON
35	Station 139	Belleville, ON
36	Station 142	Kingston, ON
37	Station 144	Brockville, ON
38	Station 1401	Iroquois, ON
39	Station 1301	Kirkwall, ON
40	Station 209	Ancaster, ON
41	Station 211	Lincoln, ON
42	Station 1703	Douglastown, ON

**Vector Pipeline (Enbridge / DTE Energy Company)**

**Figure A6-2. Vector Facilities in Ontario**



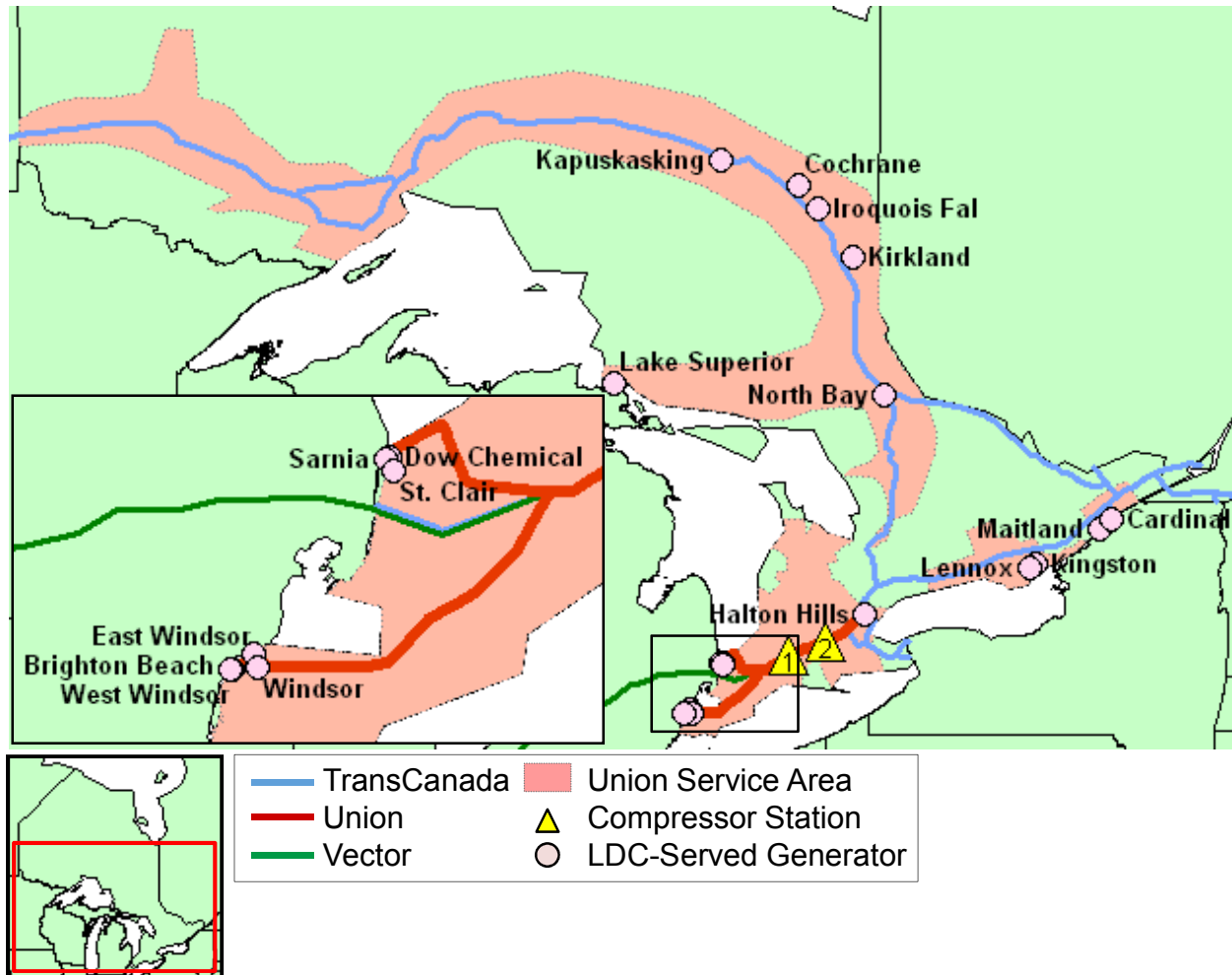
**Table A6-3. Ontario Generators Directly Connected to Vector**

<b>Generator</b>	<b>Capacity (MW)</b>
Greenfield	1,153.0

**Union Gas Limited (Spectra Energy)**

Capacity: 4,620,000 GJ/d (4,379 MDth/d)<sup>2</sup>

**Figure A6-3. Union Facilities in Ontario**



<sup>2</sup> Transport capacity from Dawn to Parkway. <http://www.uniongas.com/storage-and-transportation/informational-postings/operational-available-transport-capacity>

**Table A6-4. Ontario Generators Served by Union**

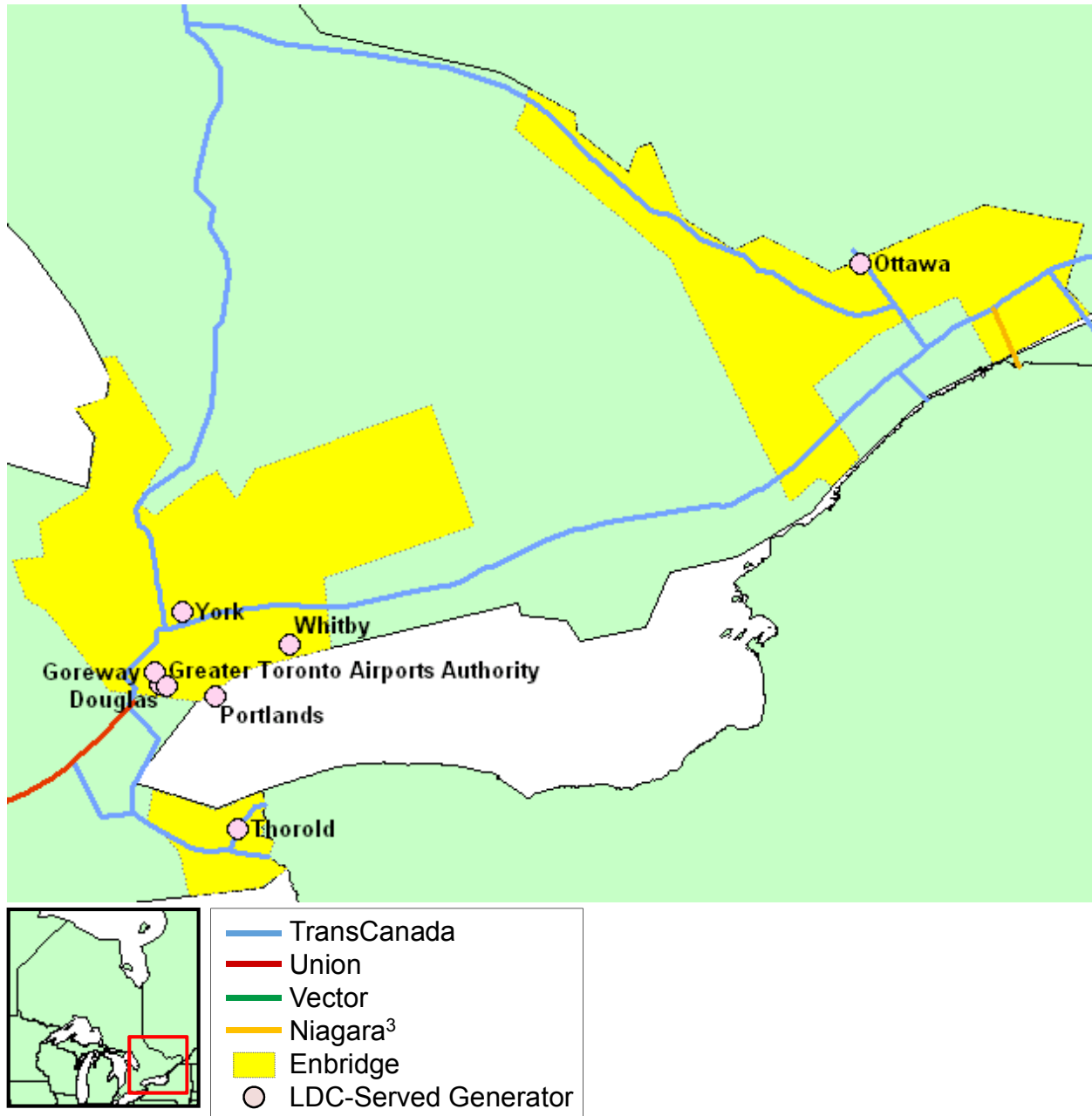
<b>Generator</b>	<b>Capacity (MW)</b>
Brighton Beach	580.0
Cardinal	184.0
Cochrane	46.5
Dow Chemical	100.0
East Windsor	100.0
Halton Hills	757.0
Iroquois Falls	131.0
Kapuskasing	60.4
Kingston	140.0
Kirkland	149.0
Lake Superior	120.1
Lennox	2100.0
Maitland	50.0
North Bay	60.4
Sarnia	510.0
St. Clair	678.0
West Windsor	128.0
Windsor	79.0

**Table A6-5. Union Compressor Stations in Ontario**

<b>ID</b>	<b>Name</b>	<b>Location</b>
1	Lobo	Lobo, ON
2	Bright	Bright, ON

**Enbridge Gas Distribution**

**Figure A6-4. Enbridge Facilities in Ontario**



<sup>3</sup> Enbridge’s subsidiary Niagara Gas pipeline can deliver up to 41 MDth/d of gas to upstate New York from an interconnection with TransCanada at Cornwall.  
 Source: St. Lawrence Gas, Niagara Gas’s sole firm shipper, reported in its 2012-13 Winter Supply Review filing that it holds 41 MDth/d of transportation capacity.

**Table A6-6. Ontario Generators Served by Enbridge**

<b>Generator</b>	<b>Capacity (MW)</b>
Douglas	126.0
Goreway	942.0
Greater Toronto Airports Authority	128.0
Ottawa	79.8
Portlands	639.1
Thorold	287.0
Whitby	56.4
York	438.0